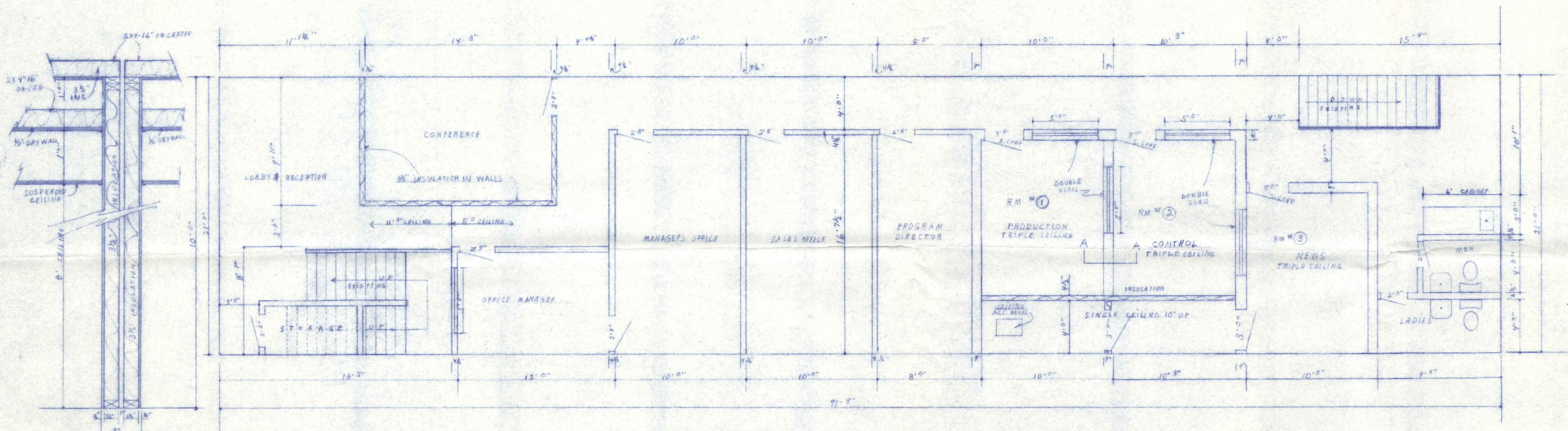


ELECTRIC 2ND FLOOR PLAN - 1/4" = 1 FOOT



A-A DET. FOR ALL 9" WALLS - 1" = 1 FOOT

2ND FLOOR PLAN - 1/4" = 1 FOOT

NOTES

- 3068-124" SOLID CORE DOORS - FOR 3 ROOMS
- CAULK 3/4" PLATES TO FLOOR RMS NO. 1, 2, 3.
- SILICONE CAULK AT JOINTS IN ROOMS NO. 1, 2, 3
- 5" FROM FLOOR TO BOTTOM OF GLASS INSULATING
- 3" THICK X 2" X 2" CELL TILE ALL ROOMS EXCEPT 2, 3
- WITH BLACK GRIP
- GLUE NEW UNDERLAYMENT ON FLOORS
- REPAIR ALL EXIST FLOORS
- GOOD SOUND RATED CARPET ON FLOORS
- AND WALLS IN ROOMS NO. 1, 2 & 3

CITY OF NAPOLEON
BUILDING DEPT.

Plan Approval
By *[Signature]* Date 5-25-79
EXIT LIGHTS REQD.

709
N. PENNY ST.

W N D H RADIO STATION NAPOLEON OHIO
By MEL LUTER CO. GEN. CONTRACTOR
5/23/79 SCALE 1/4" = 1'-0"